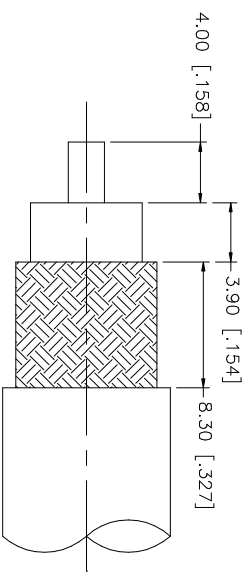
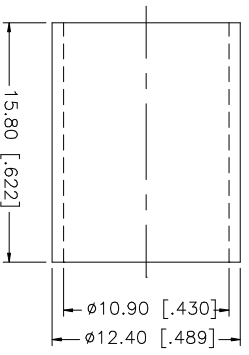
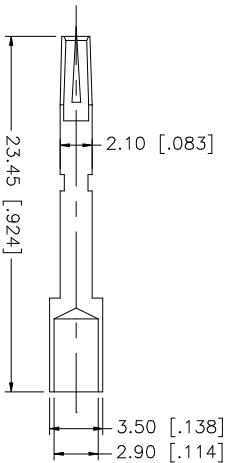
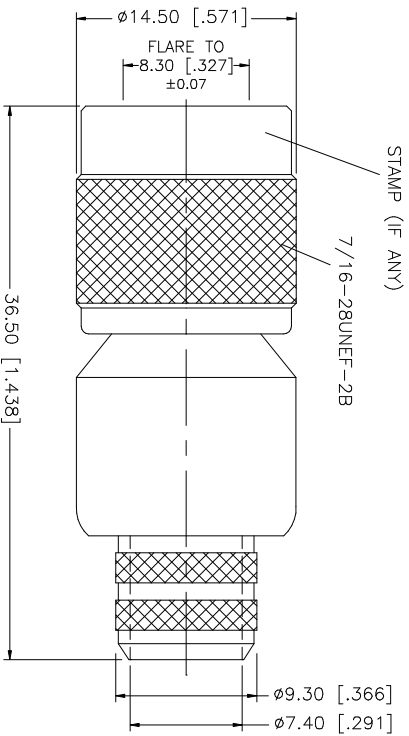


REV.	DATE	DESCRIPTION
A	04/05/03	UPDATE DRAWING FORMAT



RECOMMENDED CABLE STRIPPING DIMENSIONS



- NOTE:
1. CRIMPED FERRULE  
HEX CRIMP SIZE .429"
  2. CONTACT PIN TO SOLDER  
OR .118" HEX CRIMP

QTY	DESCRIPTION	MATERIAL	FINISH	QTY	DO NOT SCALE DRAWING
1	SHELL/BODY	BRASS	NICKEL	1	1.180 - 4.724 = ± 0.020"
1	INSULATOR	TEFLON	NATURAL	1	.315 - 1.180 = ± 0.015"
1	CONTACT PIN	PHOS. BRONZE	GOLD	1	.020 - .315 = ± 0.007"
4	GASKET	RUBBER	RED	1	ISSUED
5	FERRULE	COPPER	NICKEL	1	CHECKED
6					0.5 - 8mm ± 0.20mm
7					8 - 30mm ± 0.40mm
8					30 - 120mm ± 0.50mm
9					UNLESS OTHERWISE SPECIFIED DIMENSIONS ARE IN MILLIMETERS. DIMENSIONS IN [ ] ARE IN INCHES AND FOR CUSTOMER REFERENCE ONLY. UNLESS OTHERWISE SPECIFIED TOLERANCES FOR MILLIMETERS ARE:

**Amphenol Connex**

PART DESCRIPTION  
TNC REVERSE POLARITY CRIMP PLUG  
(FOR BELDEN 8214, 9913 LMR 400 CABLE)

APPROVALS	DATE
DRAWN G.R.S.	04/05/03
CHECKED	
ISSUED	
SHEET 1 OF 1	

DESCRIPTION	MATERIAL	FINISH	QTY	DO NOT SCALE DRAWING
DESCRIPTION	MATERIAL	FINISH	QTY	DO NOT SCALE DRAWING

CAD FILE	DWG. NO.	REV.	SIZE	SCALE
C:/122/122393RP.DWG	122393RP.DWG	A	A	NA